



Science Focus	Plants	Year 1	Spring Term 2
---------------	--------	--------	---------------

### Key Knowledge

#### A plant



A living thing that usually grows from the ground.

#### Garden Plant

A flower grown especially in a garden.  
Some common garden plants to be able to recognise and name:  
Rose  
Daffodil  
Sunflower  
Tulip

#### Wild Plant

A wild plant will grow by itself. It does not need to be cared for.  
Some common wild plants to be able to recognise and name:  
Daisy  
Dandelion  
Buttercup

#### Deciduous Trees



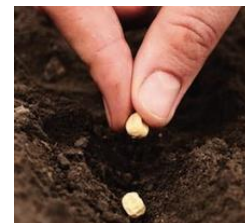
Deciduous trees lose their leaves in the autumn every year.  
Their leaves are generally broad, flat and have veins running through them.

#### Evergreen Trees



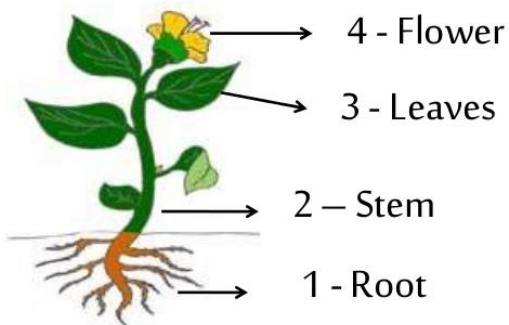
Evergreen trees have green leaves all year round. Their leaves are generally thick, waxy and narrow like needles.

#### Seed



The part of a flowering plant that can develop into a new plant.

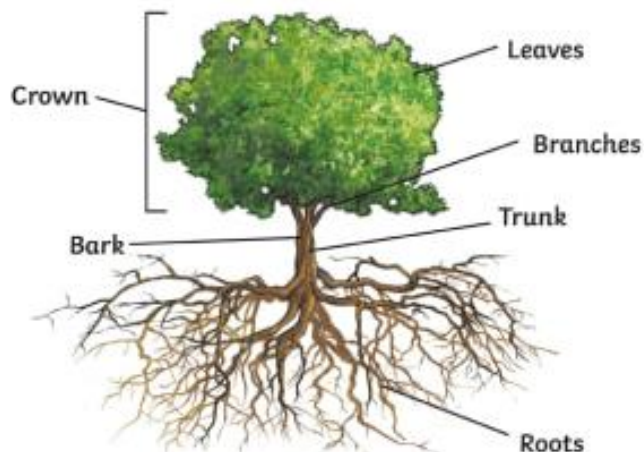
#### Parts of a Plant



#### Vocabulary

**Root** - The part of a plant that grows underground.  
**Flower** - the part of a plant that is often brightly coloured and grows at the end of the stem.  
**Stem** - the thin, upright part of a plant on which the flowers and leaves grow.  
**Leaf/leaves** - the part of a tree or plant that are flat, thin and usually green.

#### Parts of a Tree



#### What Plants Need to Grow

